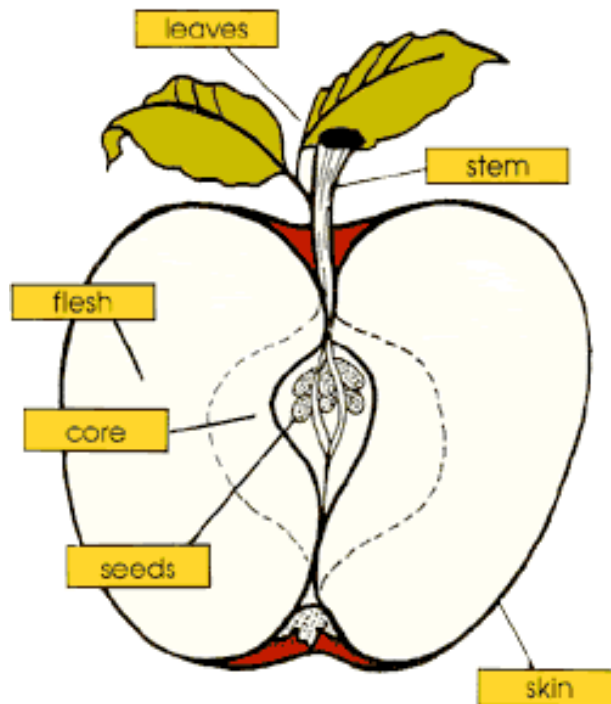
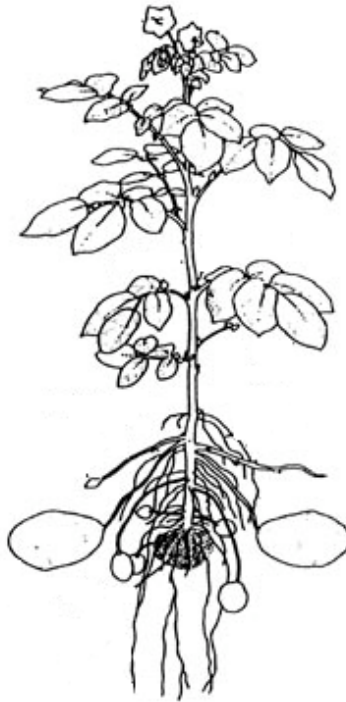


Raised Grow Bed

Use this raised grow bed to start a vegetable garden for children to work on. There are a number of lesson ideas and subjects that it can be linked to, from science to food technology. Healthy eating, types of food, structure of plants, which parts of a plant we can eat, etc are just a few subtopics that arise from these subjects. The raised grow bed is also a good way of giving inner city schools a garden and experience of plants, as they don't tend to have large, green areas.



- Can you name the parts on the fruit?
- What does each part of the fruit do?
- Which bit do we eat?



- Can you name the parts on the vegetable?
- Can you name the areas of the plant?
- What does each part of the plant do?
- Which bit do we eat?

Can you match the following fruits and vegetables to the correct part of the plant they come from?

Root	Leaves	Stem	Flower	Fruit

In some cases we may eat two parts of the plant, for example: brocolli we eat the flower and the stem.